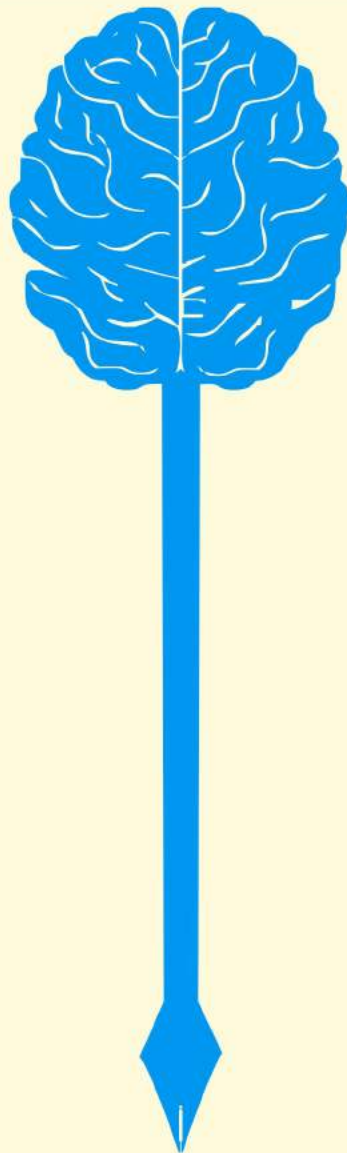




## International Institute of Graphology



"We can read your mind through Your Handwriting / Signature  
Because Handwriting is Brain writing".

Graphology : The Science of Handwriting Analysis.

Understand the real personality of self and others through Handwriting.

## **What is Graphology (Handwriting Analysis)?**

Graphology is the study of a human subconscious mind and character through the medium of handwriting. The study of handwriting is based on a general style of writing, formation of letters, slant and angle of the letters, the alignment and space between letters, words and lines, etc. Through this study, one can get an idea of a person's character, mentality, health, Relationships, and attitude towards a particular field of profession, and much more.

## **Handwriting is brain writing :**

It is a documented fact that when a person communicates by way of speaking, only 15-20% of brain cells are activated, whereas when a person writes, nearly 85-90% of the brain cells are activated. Hence it is always easier for a graphologist to understand the person thoroughly through the handwriting. Brain impulses controls handwriting and the act of handwriting involve conscious and sub-conscious mind, nerves, muscles and fingers.

## **Change Your Writing - Change Your Personality :**

If a person changes certain formations with honest efforts and practice it, will get the desired results (changes) in his personality. It works on reverse sub-conscious programming principle.- Change in actions will bring change in thoughts. And changed thoughts will create desired changes in personality.

## **How can Graphology benefit you?**

After learning graphology an individual can know his / her strengths and weaknesses and sees himself / herself into a totally new light. It can reveal various problems and its reasons that are associated with our mind-set.

## **Knowing people around you :**

The knowledge of graphology also enables a person to know the real aspects of personalities and hence, it not only helps you to understand them better, but also improve relations with them. After learning Graphology, you can come to know which person is capable of speaking lie, who is trustworthy, who has a suicidal tendency, jealousy nature of a person, level of confidence, romantic attitude of a person, introvert, extrovert, which student gets good marks, argumentative nature, Who has habit of telling "I don't have time", Why some people express their feelings and some don't, who are the people who get tired by watching cricket on TV and who don't get tired after playing cricket on the ground etc.

## **Life partner selection :**

Graphology can help in selecting the right partner. It will help you to understand the compatibility of a personality with your mind-set & behavior.

## **Child development :**

Every child's mind is programmed in the childhood by parents. Parents can understand their children in a better perspective to know their strengths and weaknesses and can mould them to enhance their hidden skills for becoming better individuals of tomorrow. **Benefits to Parents :**

- To help child to become more constructive.
- To help child to become more expressive and balanced.
- To help child in academics in better way.
- To help child to create good balance in sports and studies.
- To Bridge the gap between parent and child.

## **Business partner selection :**

It will help you to choose correct partner in your business to avoid future complications. It will help you to get like minded, honest and trustworthy person in your business.

## **Criminology :**

Graphology can assist to the police department in solving crimes related to burglary, thefts, suicides and extortion. It also assists banks and insurance companies to detect signature frauds. Graphology can expedite investigation via writing and signature of suspects and solve crimes.

## **Health :**

International Institute of Graphology is continuously involved in following studies through handwriting. We are trying to get closer to the possibilities of handwriting and physical health connections, like-Gastrointestinal disorder, Psycho somatic conditions, orthopedic deformation, Infertility, Sexual problems, Headache, Migraine etc., Kidney malfunctioning, Cardiac problems and blood pressure, pulmonary disorder, etc.

## **Recruitment :**

Graphology can help in recruiting the right candidate for the right job. E.g. if a company wants to recruit excellent team players or very good leaders etc., graphology can help in identifying these individuals via their handwriting and this can easily benefit the individual and organization.



### **Handwriting can reveal characteristics of a candidate for recruitment process, below are some of them :**

- Leadership quality of a candidate
- Tendency to change the job / company frequently
- Behavior with seniors
- Revolting against management
- Capacity to work under pressure
- Optimistic nature of the candidate
- Quality management ability
- Job sincerity of a candidate
- Trustworthiness in handling finance
- Behavior with peers and juniors
- Behavior with the opposite sex
- Handling conflict situations
- Creative thinking
- Group-work abilities
- Ability to complete the project / job in time
- Long term employability

### **Syllabus for Basic Level -1**

- Introduction to Graphology
- Margins
- Spacing
- Handwriting Pressure
- Handwriting Zones
- Individual Letters (h,f,a,r,y,u,v,)
- Principles of Graphology
- Handwriting Size
- Baselines
- Handwriting Slants
- Connections - Disconnections
- Introduction to Signature

### **Other Activities of the Institute :**

1. Research on the relationship between one's handwriting and the diseases he / she suffers from.
2. Certain handwriting formations for better health and relationship.
3. Handwriting analysis for recruitments for corporate.
4. Conceptual logo designing based on graphology for best suitability to the organization.

### **Eligibility to join the course :**

Anyone, who understands English may join the course. Minimum age limit is 14 years. There is no maximum age limit. For children below 14 years, we have separate course.

### **Who joins this course?**

People from all walks of life join this course, such as college students, Engineers, MBAs, homemakers, chartered accountants, doctors, clinical psychologists, counselors, teachers, architects, HR managers, self employed people, Homeopaths, Software professionals, journalists etc.

### **About Faculty :**

Sandip S Arsude is an expert Graphologist and having huge experience in the area of graphology research and handwriting analysis teaching. He has done MBA from MIT-School of Management, Pune. He also holds Post Graduate Diploma in Advertising and Communication Management from Symbiosis Institute of Business Management, Pune.

### **Graphology Training :**

Sandip S Arsude is continuously doing research in the area handwriting analysis. He has taught this unique science in the B-School-Management Institute of Leadership and Excellence (MILE-College) Pune, as a course subject for two years. He has trained 300 primary school teachers under Rural Empowerment Project in Bhiwandi (Mumbai). Apart from this, he is teaching this science in 'Infosys' and 'Persistent Systems Limited', Pune for more than 3 years. Other clients are 'BMC Software' & 'HDFC Bank' & Tech Mahindra. He has solved various forgery and frauds cases of individuals, private firms as well as Government organizations. He has trained various organizations 'officials. He is working for MNC companies as an Analyzer in recruitment processes. His interview on Graphology (Handwriting Analysis) has also been aired on Big-FM Radio Channel at Mumbai in 2010.

### **What is a logo?**

"A symbol, alphabet, word, name, image or other small design adopted by an organization to identify its products, services, etc." In generic terms, a logo can be a symbol, picture, company name, abbreviation. Logo helps to identify company, products and its services in an unique way. In short it is the signature of company or face of company which represents it's complete identity. A logo is not only a symbol depicting organization, product or services but also it communicate about organization's mission, vision, values and culture. So it is very important to make sure that logo communicate well and correct message to its audience. To achieve this logo should always be selected or designed very carefully.

### **Logo Designing By IIG :**

International Institute of Graphology(IIG) has got expertise in the area of Logo Designing. As, we are designing logo's on the basis of sub-conscious match up with the business owner & as per the requirement of business of organization, in a scientific way. Signature shows a person's personality / image, in the similar way the logo shows company image. So the core design of logo plays an important role in the formation of company image. That is the reason the logo design has to be made in a scientific and logical way.



## Services Offered By - International Institute of Graphology

- Graphology Training
- Handwriting Analysis
- Logo Designing (Conceptual Logos in scientific way-As per sub-conscious match-up)
- Recruitment Analysis (Assistance to place right candidate at right job)
- Career Counseling
- Personal Counseling
- Forgery Verification (Signature Verification)

## Scientifically Designed Logo's By - International Institute of Graphology



ALFATECH THERMAL ENGINEERS PVT. LTD.



ORNATE  
Live Luxury



Mission Homeopathy  
सर्वे भवान् सुखिनः सर्वे सन्ति निरामयः



Mulchand Jewellers and Saraf

